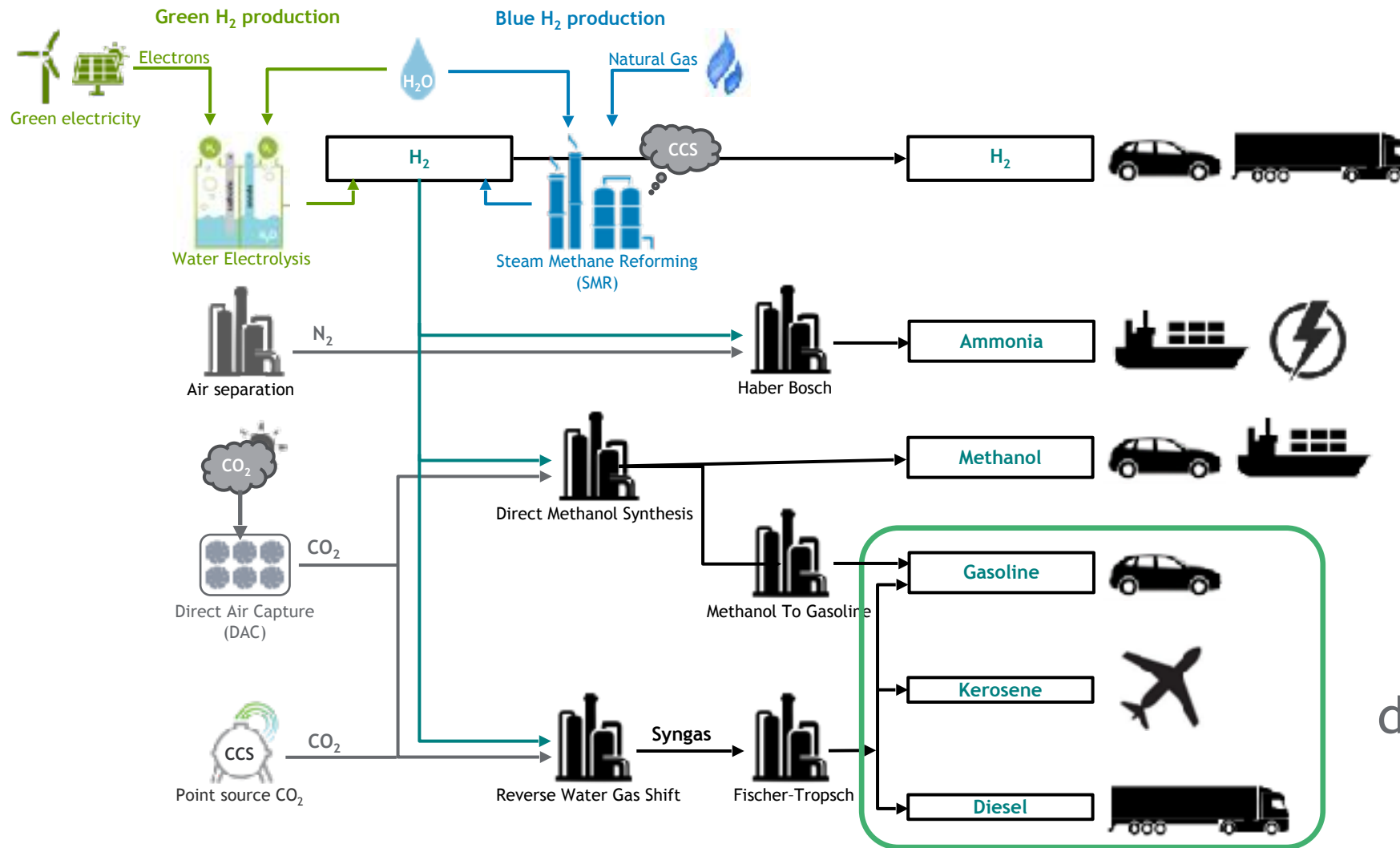


# Energizing Mobility with Synthetic Fuels



# Synthetic fuels | Liquid energy derived from H<sub>2</sub>

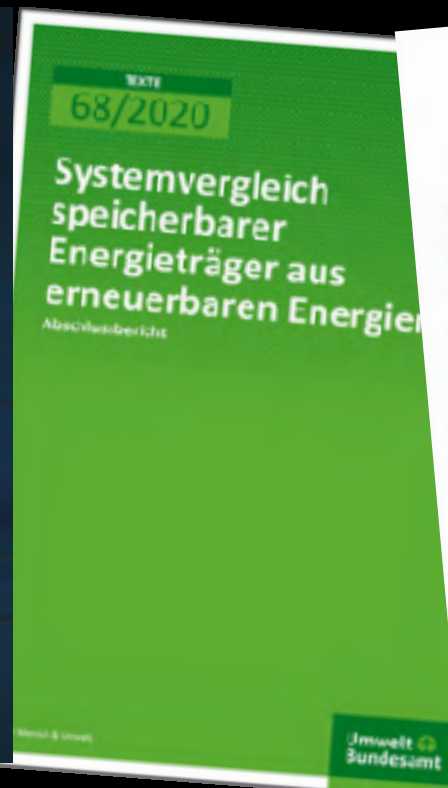
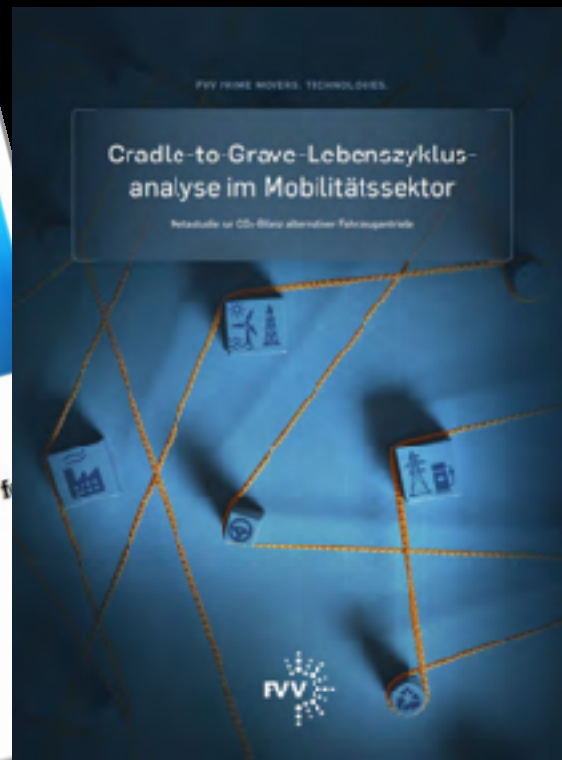


Synthetic  
drop-in Fuels

# KEY BENEFITS



# Sustainability





# Compatibility

**Existing fueling / distribution infrastructure**

**Existing road vehicles**





# Complementarity

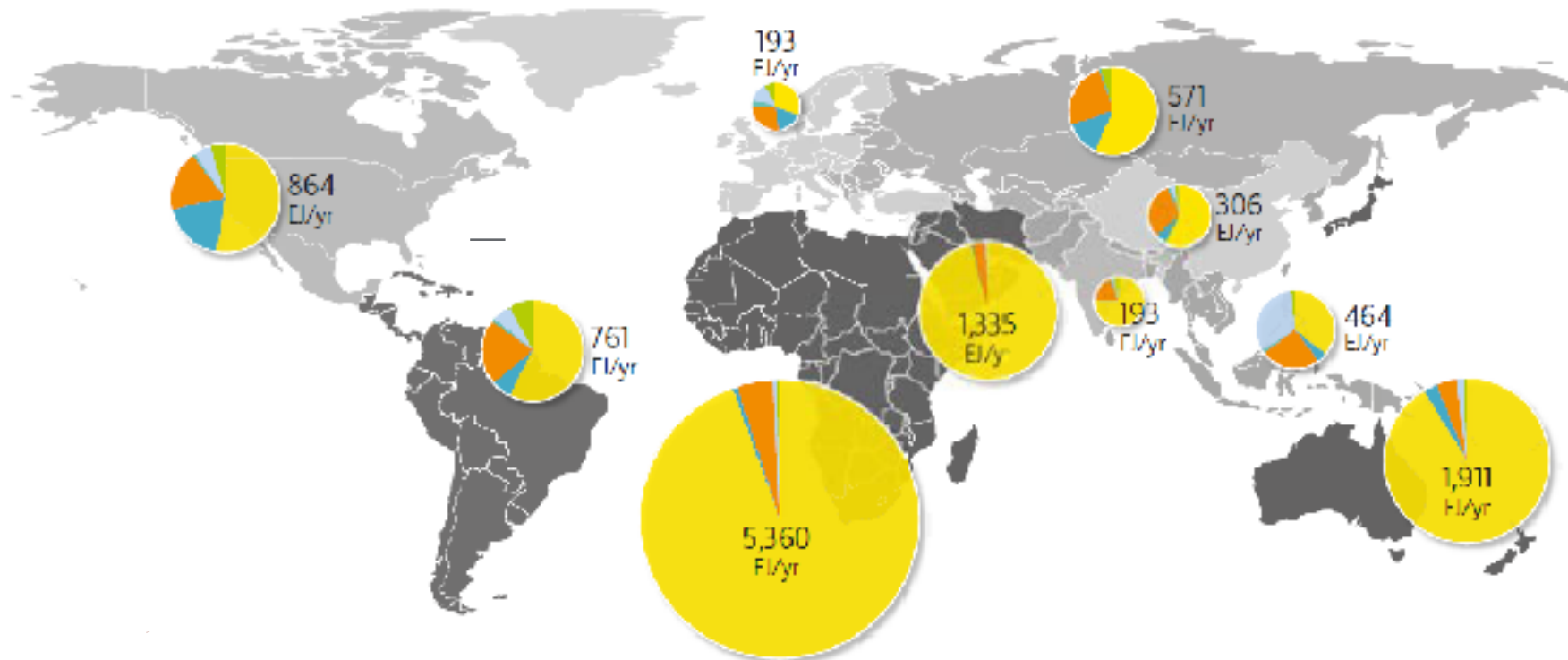
**Can complement advanced biofuels and electrification.**



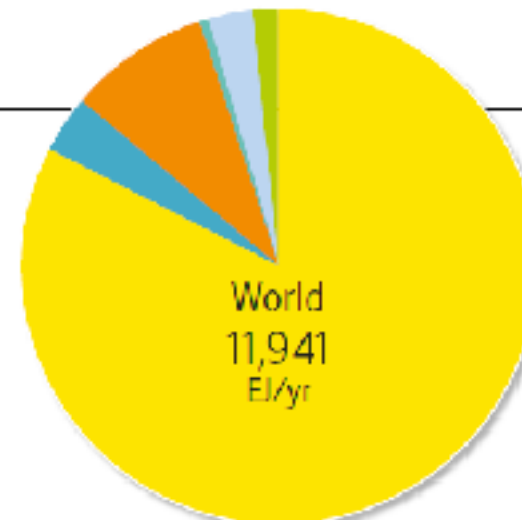
# Scalability

**Can be produced at scale in regions with significant renewable resources, using proven and commercialized technologies.**

# Abundant renewable energy potential



Total technical RE Potential  
in EJ/yr for 2050 by  
Renewable Energy Source:



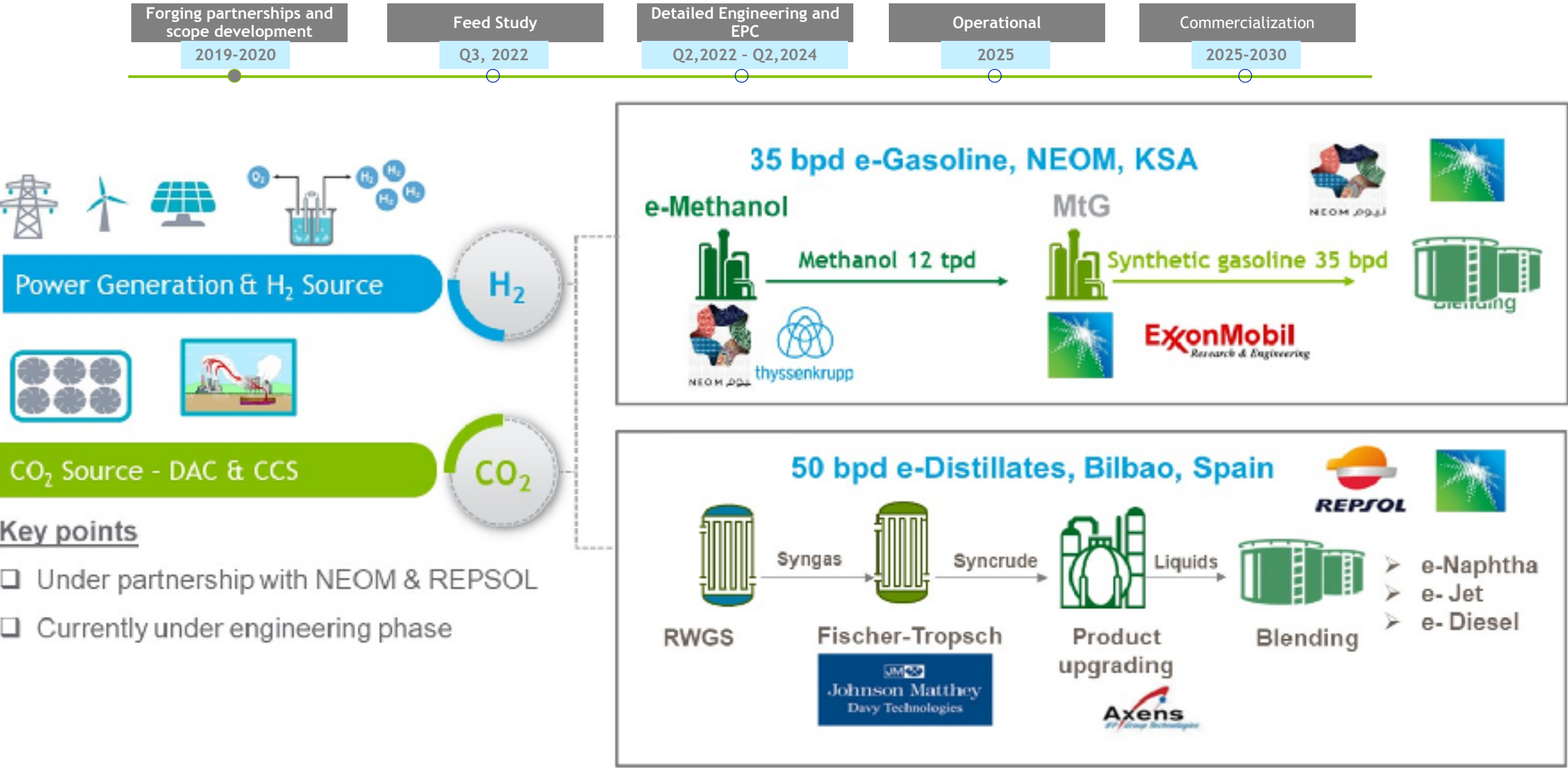
World Energy  
consumption  
600 EJ in 2022



# Journey towards synthetic fuel



# De-risk technology with pilot production plants



Legal disclaimer: Development of pilot plant is still subject to customary closing conditions, including receipt of regulatory approval. <sup>10</sup>

